

KIM STANLEY MEDLEN



HAART

15 November - 13 December 2009

GALERIE DÜSSELDORF

Galerie Düsseldorf 9 Glyde Street Mosman Park Western Australia WA 6012 tel/
fax 08 93840890 Gallery hours : Wednesday - Friday 11 - 5 Sunday 2 - 5 and
by appointment Closed public holidays email : gd@galeriedusseldorf.com.au
Website : www.galeriedusseldorf.com.au Directors : Magda + Douglas Sheerer

GALERIE DÜSSELDORF

In his first solo exhibition **Kim Stanley Medlen** explores the lives of men in the gay community in a contemporary context where highly-active antiretroviral treatment (HAART) has given much hope for those who are HIV positive. The sculptural works in this exhibition, titled HAART, reveal the social impacts and responses of those living long-term with HIV, along with the collateral effects upon gay men who are HIV negative.

In **HAART** the sculptures echo the masquerade that gay men often undertake in order to conceal their sexuality or HIV status. Through body building, masking effeminate mannerisms and adopting masculine facades, these men seek to evade the stigmas of derogatory language and the communities' fear of HIV. The artist also comments on the difficult journey faced by those on the life support of HAART, where promise and hope is accompanied by a tiring ritual of medication and waiting for the unknown.

The materials chosen for the HAART sculptures emphasise the masquerade, where the gloss and the precious hide the soft and the less valued, and the beauty and shine of the solid forms conceal the dangers of the bodily fluids they represent.

* Kim Stanley Medlen was the recipient of the 2007 Curtin University / Galerie Düsseldorf Post Graduate Scholarship

KIM STANLEY MEDLEN : "HAART" 2009

1 "Mask" 2009 Automotive paint over balsa wood, 22 carat gold over copper, freshwater pearls, perspex 90 x 70 x 15 cm \$ 1,600	6 "Journey" 2009 Automotive paint over balsa wood 22 carat gold over copper, freshwater pearls, perspex 90 x 70 x 15 cm \$ 1,600
2 "Queen" 2009 Automotive paint over balsa wood, 22 carat gold over copper, freshwater pearls, perspex 90 x 70 x 15 cm \$ 1,600	7 "Queer" 2009 Automotive paint over balsa wood, 23 carat gold leaf over copper, freshwater pearls, perspex 50 x 210 x 15 cm \$ 2,000
3 "Masquerade" 2009 Automotive paint over balsa wood, 23 carat gold leaf over copper, freshwater pearls, perspex 90 x 70 x 15 cm \$ 1,600	8 "Unknown" 2009 Automotive paint over balsa wood' 22 carat gold over copper, freshwater pearls, acrylic on perspex 100 x 100 x 5 cm \$ 2,000
4 "Fag" 2009 Automotive paint over balsa wood, 22 carat gold over copper, freshwater pearls, perspex 90 x 70 x 15 cm \$ 1,600	9 "Untold" 2009 Automotive paint over balsa wood, 22 carat gold over copper, freshwater pearls, acrylic, tape on perspex 100 x 100 x 15 cm \$ 2,000
5 "Pumped" 2009 Automotive paint over balsa wood, 22 carat gold over copper, freshwater pearls, perspex 90 x 70 x 15 cm \$ 1,600	10 "Understood" 2009 Automotive paint over balsa wood, 22 carat gold over copper, acrylic texture on perspex 100 x 100 x 15 cm \$ 2,000

Kim Stanley MEDLEN

Born 1958

Education

- 2000 Bachelor of Arts (Art) at Curtin University of Technology
2001 Bachelor of Arts (Art) (Honours) (First Class) at Curtin University of Technology
Present Completing Doctorate of Creative Arts (DCA) at Curtin University of Technology

Solo Exhibitions

- 2009 HAART, Galerie Düsseldorf, Perth

Group Exhibitions

- 2007 dOFa07, John Curtin Gallery, Curtin University of Technology, Perth
2006 Untitled, Monart Gallery, Perth
2002 Hale Art Exhibition, Hale School, Perth
2001 SOFA School of Art Graduate Exhibition, Curtin University of Technology, Perth
2001 Hatched, Healthway National Graduate Show
Perth Institute of Contemporary Arts, Perth
2000 Bread'N'Butter and T'Arts Production Exhibition
Craftwest Centre for Contemporary Craft, Perth
2000 Boardroom Cabinet, Humanities Building
Curtin University of Technology, Perth
2000 The City of Perth Craft Awards, Craftwest Centre for Contemporary Craft, Perth
2000 Be Active Student Exhibition, Craftwest Centre for Contemporary Craft, Perth
2000 Curtin University of Technology Open Day Exhibition, John Curtin Gallery, Perth
2000 100 Degrees, School of Art Graduate Exhibition
Curtin University of Technology, Perth
1999 Be Active Student Exhibition, Craftwest Centre for Contemporary Craft, Perth

Collections

- 2007 John Curtin Gallery, Curtin University of Technology

Bibliography

- 2009 Australian Art Review, Andrew Nichols "HAART ache", Nov 2009-Jan 2010
2007 Canning Times, "Curtin opens to reveal stars", 17-23 April
2000 Fresh Magazine, "Pris-teen", Aug/Sep Issue 07
2000 The West Australian Newspaper, Josephine Allison, 14 Aug
2000 Interiors & Gardens Post, "One-off pieces for student show"
25 Nov

Awards

- 2007 Galerie Dusseldorf / Curtin University Postgraduate Scholarship
2002 Australian Postgraduate Award Scholarship
2000 Object Award – Best object or 3D work by a final year student
2000 Siever Award – Outstanding Achievement in Jewellery / 3D Design
2000 Be Active Student Exhibition – Highly Commended
2000 Curtin University of Technology Vice Chancellors List 2nd Semester
2000 Curtin University of Technology Vice Chancellors List 1st Semester
1999 Curtin University of Technology Vice Chancellors List 2nd Semester
1999 Artisans of the Sea Award

11

"Stigma" 2009

Automotive paint over balsa wood, 22 carat gold over copper, freshwater pearls, perspex.
50 x 180 x 15 cm \$2,000

12

"Therapy" 2009

Automotive paint over balsa wood, 22 carat gold over copper, freshwater pearls, perspex
120 x 44 x 15 cm \$1,500

13

"d4T" 2009

Automotive paint over balsa wood, 23 carat gold leaf over copper, freshwater pearls, perspex
40 x 150 x 15 cm \$1,600

14

"Self" 2009

Automotive paint over balsa wood, 22 carat gold over copper, freshwater pearls, perspex
60 x 30 x 10 cm \$650

15

"Hope" 2009

Automotive paint over balsa wood 22 carat gold over copper, freshwater pearls, perspex
60 x 30 x 10 cm \$650

16

"Promise" 2009

Automotive paint over balsa wood, 22 carat gold over copper, freshwater pearls, perspex
60 x 30 x 10 cm \$650

17

"Lost" 2009

Automotive paint over balsa wood, 22 carat gold over copper, perspex
60 x 30 x 10 cm \$600

18

"Life" 2009

Automotive paint over balsa wood, 22 carat gold over copper, freshwater pearls, perspex
60 x 30 x 10 cm \$600

19

"Veil" 2009

Automotive paint over balsa wood, 22 carat gold over copper, freshwater pearls, perspex
60 x 30 x 10 cm \$650

20

"Ritual" 2009

Automotive paint over balsa wood, 22 carat gold over copper, freshwater pearls, perspex
60 x 30 x 10 cm \$650

21

"Whisper" 2009

Automotive paint over balsa wood, 22 carat gold over copper, freshwater pearls, perspex
60 x 30 x 10 cm \$650

22

"Silence" 2009

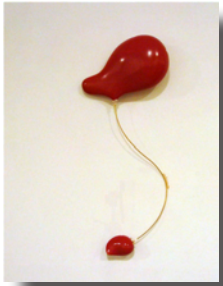
Automotive paint over balsa wood, 22 carat gold over copper, freshwater pearls, perspex
60 x 30 x 10 cm \$650

23

"Waiting" 2009

Automotive paint over balsa wood, 22 carat gold over copper, freshwater pearls, perspex.
60 x 30 x 10 cm \$650

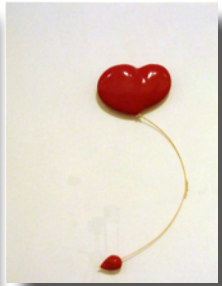




1



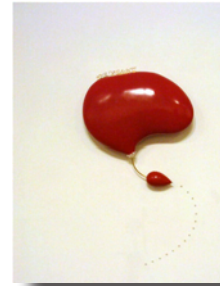
2



3



4



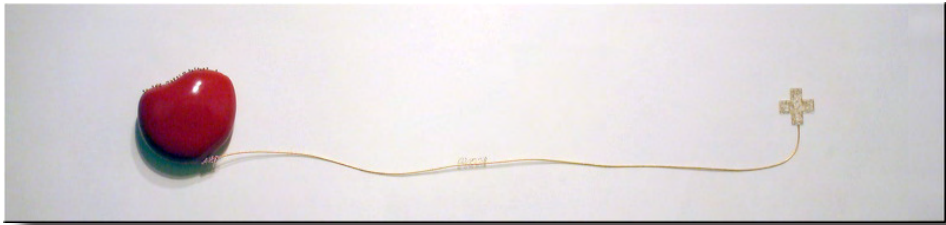
5



6



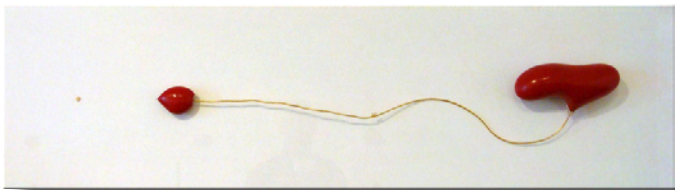
8



7



11



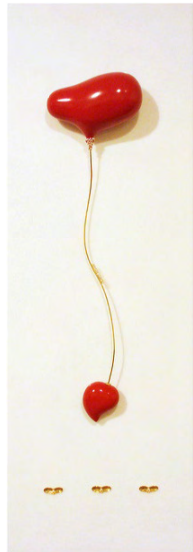
13



9



10



12



14



15



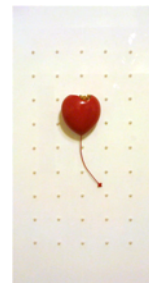
16



17



18



19



20



21



22



23